



terra cotta collection

Vesta's Terra Cotta collection intricately weaves warm earth tones throughout the composition of this ethnically inspired grouping of finials and hardware. The collection features mixed media design utilizing wood, handmade pottery and beaded metals - all capable of working in unison to help you produce a truly unique and eye-catching window treatment.

COLLECTION NOTES:

Vesta recommends additional brackets every 4-5 feet with this collection to properly support the weight of your treatment. For the purpose of quoting, we loosely figure 4 rings per foot - your drapery workroom can provide a more accurate quantity. The collection's pole splice can be used to achieve longer spans - the required center bracket will help conceal the resulting seam.

ABBREVIATION KEY:

D = diameter
H = height
L = length
P = projection
W = width
ID = inside diameter
OD = outside diameter

AVAILABLE FINISHES:

EB = ebony (wood stain)
HV = havanna (wood stain)
NA = natural (wood stain)
PB = polished brass (beaded)
PC = polished chrome (beaded)
CB = chrome/brass (beaded)

AVAILABILITY:

in-stock, typically ships within 24-48 hours

MATERIALS:

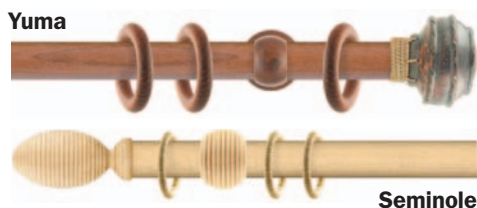
wood, pottery, brass

PRODUCT FAMILY:

◆ Harvest the Beauty

SEE IT OR SHOW IT ONLINE AT:

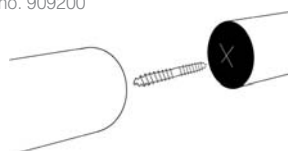
www.ivesta.com/htb-tec.html



COMPONENT SPOTLIGHT

Featured below is this collection's pole splice. To install, just find the center of the two poles you plan to join and screw them together until tight. The required center bracket for a longer span will help conceal the resulting seam produced by joining two poles.

part no. 909200



terra cotta collection

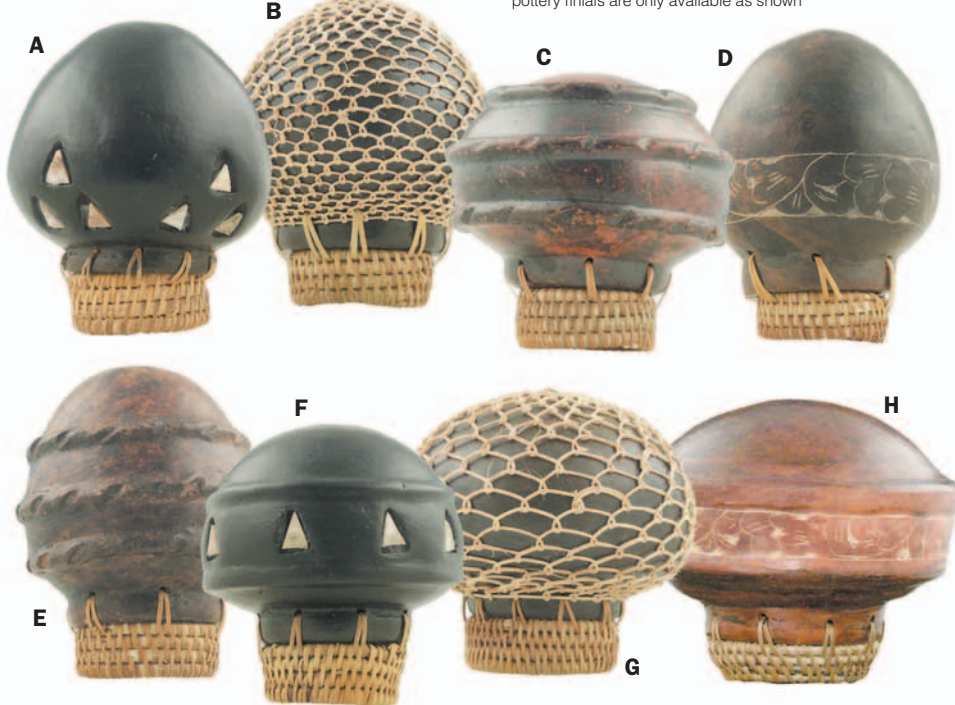
1 1/8" diameter
bracket required every 4 - 5 feet

Vesta Inc · 109 Welpine Ridge Road · Pendleton, SC 29670 · 800.638.3782 voice · 864.225.0228 fax · www.ivesta.com

51

Availability: in-stock, typically ships within 24-48 hours | **Available Finishes:** EB, HV, NA, PB, PC, CB | **Material:** wood, pottery, brass | **Product Family:** Harvest the Beauty

FINIALS

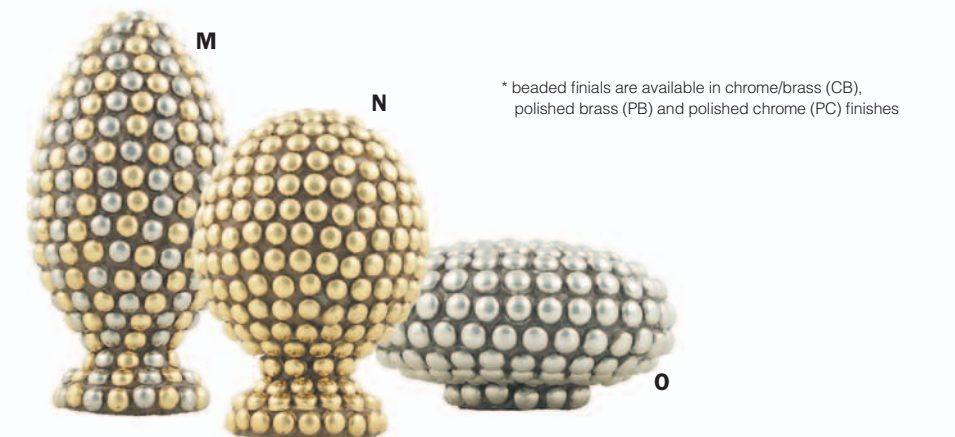


* pottery finials are only available as shown

* due to the nature of pottery, dimensions/details may vary slightly



* wood finials are available in ebony (EB), havanna (HV) and natural (NA) finishes



* beaded finials are available in chrome/brass (CB), polished brass (PB) and polished chrome (PC) finishes

A. Apache

#291112 - 2 5/8"D, 3 1/4"L
*only available as shown

B. Gila

#291132 - 2 5/8"D, 3 1/4"L
*only available as shown

C. Yuma

#291552 - 3"D, 3"L
*only available as shown

D. Hopi

#291142 - 2 5/8"D, 3 1/4"L
*only available as shown

E. Mohawk

#291152 - 2 5/8"D, 3 1/4"L
*only available as shown

F. Navajo

#291512 - 2 3/4"D, 3"L
*only available as shown

G. Oglala

#291532 - 3"D, 3"L
*only available as shown

H. Pueblo

#291542 - 3"D, 2 5/8"L
*only available as shown

BRACKETS



Shoshone

#292431 - 2 1/4"D, 5 3/4"P
*stem may be cut



Comanche

#292531 - 2 1/4"D, 5 3/4"P
*stem may be cut



Aztec

#292430 - 2 1/8"H, 3 3/8"P



Zuni

#292530 - 2 1/8"D, 2"P



Inside Mount

#292000
1 7/8"D, 1 1/8"L

ACCESSORIES



Mohican Tieback

#920703 - 1 3/4"D, 3"P



Wand

#900030 - 39"L



Wood Poles

#297140 - 1 1/8"D, 55"L
#297160 - 1 1/8"D, 63"L
#297180 - 1 1/8"D, 71"L
#297200 - 1 1/8"D, 78"L
#297250 - 1 1/8"D, 98"L



Pole Splice

#909200 - 2"L



Ring wood

#296010
1 3/8"ID, 2 1/8"OD



Ring rattan

#296020
1 5/8"ID, 2"OD



Ring Clip

#909100

Dimensions shown beneath the hardware describe the physical characteristics of that item - IT DOES NOT REFER TO THE TUBE DIAMETER IT'S COMPATIBLE WITH.