



BUCKINGHAM™ COLLECTION DECORATIVE DRAPERY HARDWARE





BUCKINGHAM™ COLLECTION

The Buckingham™ decorative drapery hardware collection evokes the rich heritage of old world England in today's most discerning homes by following in the tradition of fine craftsmanship. Each piece is intricately detailed and hand finished and is as distinctive as it is beautiful to transform any window into a vision of grandeur.

New styles blend with updated finishes to create a feeling steeped in grand tradition. The introduction of twenty-five new finial, end cap, ring, holdback, scarf holder and sconce designs – and five new hand applied, multiple step finishes, including Brandywine, Mocha, Copper Penny, Aged Platinum, and Old World White, bring an updated look to one of Kirsch's most popular collections.

Kirsch
ELEGANCE DEFINED

GALLERY
KIRSCH

Featuring product design winner, Melinda P. Conley, ASID, from entries into Gallery Kirsch Finial Design Competition.

BUCKINGHAM™ COLLECTION

Decorative Hardware Finials
For use with 1 3/8" and 2" poles, including Estate Ultra™



CWB900 Empress Finial
Size: 6"w x 3 1/2"h x 3 1/2"d
For use with 1 3/8" & 2" Poles

CWB906 Hobnail Finial
Size: 5"w x 3 1/4"h x 3 1/4"d
For use with 1 3/8" & 2" Poles



PRODUCT
DESIGN
WINNER



CWB901 Teacup Finial
Size: 4 1/4"w x 4 1/4"h x 4 1/4"d
For use with 1 3/8" & 2" Poles

CWB907 Wine Flute Finial
Size: 6 1/2"w x 3 3/4"h x 3 3/4"d
For use with 1 3/8" & 2" Poles



CWB902 Crown Royale Finial
Size: 7 1/2"w x 4"h x 4"d
For use with 1 3/8" & 2" Poles

CWB908 Regal Finial
Size: 6 1/2"w x 4"h x 4"d
For use with 1 3/8" & 2" Poles



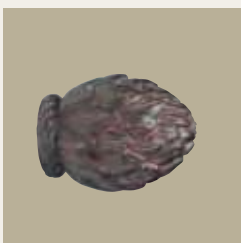
CWB903 Cross Geometric Finial
Size: 6"w x 4"h x 4" d
For use with 1 3/8" & 2" Poles

CWB558 Woven Finial
Size: 6 1/2"w x 4"h x 4" d
For use with 1 3/8" & 2" Poles



CWB904 Twist Finial
Size: 7"w x 3"h x 3"d
For use with 1 3/8" & 2" Poles

CWB208 Windsor Finial
Size: 7 1/2"w x 4"h x 4" d
For use with 1 3/8" & 2" Poles



CWB905 Artichoke Finial
Size: 7"w x 3 3/4"h x 3 3/4"d
For use with 1 3/8" & 2" Poles

CWB215 Fleur De Lis Finial
Size: 7 1/2"w x 5 3/4"h x 2 1/2" d
For use with 1 3/8" & 2" Poles



*All items in the Buckingham™ Collection are available in the following finishes:
074 Gold, 084 Mahogany, 700 Rustic Tortoise, 701 Aged Gold, 744 Distressed Oak, 791 Old World White,
792 Copper Penny, 793 Mocha, 794 Brandywine, 795 Aged Platinum, Unfinished 091.*

*The Teacup Series (finials, brackets, rings and holdback) are also available in 2 Specialty Contrast finishes:
796 Old World White/Gold, and 797 Black/Aged Platinum.*

BUCKINGHAM™ COLLECTION

Decorative Hardware Finials

For use with 1½" and 2" poles, including Estate Ultra™



CWB218 Pirouette Finial

Size: 7" w x 4¼" h x 2½" d
For use with 1½" & 2" Poles

ACA203 Magnolia Finial

Size: 6" w x 3" h x 3" d
For use with 1½" & 2" Poles



CWB223 Leaf Dance Finial

Size: 7½" w x 6" h x 2½" d
For use with 1½" & 2" Poles

ACA205 Acorn Finial

Size: 6" w x 3½" h x 3½" d
For use with 1½" & 2" Poles



CWB225 Floral Urn Finial

Size: 7" w x 5" h x 2½" d
For use with 1½" & 2" Poles

CWB201 Acanthus Leaf Finial

Size: 6" w x 3½" h x 3½" d
For use with 1½" & 2" Poles



CWB228 Pineacanthus Finial

Size: 7" w x 3½" h x 3½" d
For use with 1½" & 2" Poles

CWB203 Pine Cone Finial

Size: 6" w x 3" h x 3" d
For use with 1½" & 2" Poles



CWB222 Onion Dome Finial

Size: 5½" w x 4½" h x 2½" d
For use with 1½" & 2" Poles

CWB209 Plume Finial

Size: 5½" w x 5" h x 2½" d
For use with 1½" & 2" Poles



CWB224 Cone Flower Finial

Size 5¾" w x 3¾" h x 2½" d
For use with 1½" & 2" Poles

CWB214 Cone Finial

Size: 6" w x 3" h x 3" d
For use with 1½" & 2" Poles

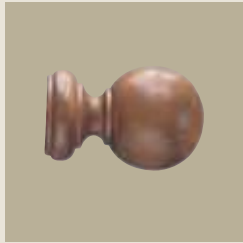


All items in the Buckingham™ Collection are available in the following finishes: 074 Gold, 084 Mahogany, 700 Rustic Tortoise, 701 Aged Gold, 744 Distressed Oak, 791 Old World White, 792 Copper Penny, 793 Mocha, 794 Brandywine, 795 Aged Platinum, Unfinished 091.

The Teacup Series (finials, brackets, rings and holdback) are also available in 2 Specialty Contrast finishes: 796 Old World White/Gold, and 797 Black/Aged Platinum.

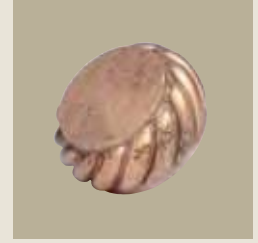
BUCKINGHAM™ COLLECTION

Decorative Hardware Endcaps
For use with 1 3/8", 2" and 3" poles, including Estate Ultra™



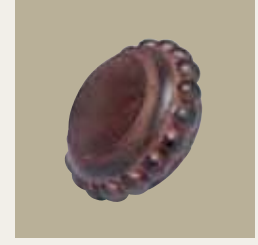
CWB559 Wood Ball Finial
Size: 3 3/8" w x 2 3/8" h x 2 3/8" d
For use with 2" Pole

CWB930 Rope Endcap
Size: 1 1/4" w x 2 1/2" h x 2 1/2" d
For use with 2" Pole



CWB700 Fluted Endcap
For use with 1 3/8" Pole

CWB931 Bead Endcap
Size: 1 1/4" w x 2 1/2" h x 2 1/2" d
For use with 2" Pole



CWB701 Fluted Endcap
For use with 2" Pole



CWB702 Fluted Endcap
For use with 3" Pole



CWB928 Crown Royale Endcap
Size: 1 1/4" w x 2 1/2" h x 2 1/2" d
For use with 2" Pole



CWB929 Teacup Endcap
Size: 1 1/4" w x 2 1/2" h x 2 1/2" d
For use with 2" Pole



*All items in the Buckingham™ Collection are available in the following finishes:
074 Gold, 084 Mahogany, 700 Rustic Tortoise, 701 Aged Gold, 744 Distressed Oak, 791 Old World White,
792 Copper Penny, 793 Mocha, 794 Brandywine, 795 Aged Platinum, Unfinished 091.*

*The Teacup Series (finials, brackets, rings and holdback) are also available in 2 Specialty Contrast finishes:
796 Old World White/Gold, and 797 Black/Aged Platinum.*

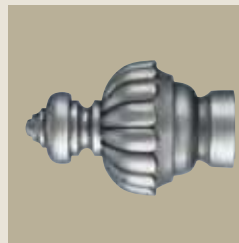
BUCKINGHAM™ COLLECTION

Decorative Hardware Finials
For use with 3" poles



CWB250 Windsor Finial

Size: 9" w x 5¼" h x 5¼" d
For use with 3" Pole



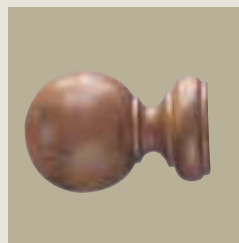
CWB252 Camelot Finial

Size: 7" w x 4½" h x 4½" d
For use with 3" Pole



CWB254 Wood Ball Finial

Size: 5¼" w x 3¾" h x 3¾" d
For use with 3" Pole



CWB255 Acanthus Leaf Finial

Size: 9" w x 4¾" h x 3¾" d
For use with 3" Pole



CWB909 Woven Finial

Size: 6½" w x 4½" h x 4½" d
For use with 3" Pole

CWB256 Pine Cone Finial

Size: 9" w x 4¾" h x 3¾" d
For use with 3" Pole



*All items in the Buckingham™ Collection are available in the following finishes:
074 Gold, 084 Mahogany, 700 Rustic Tortoise, 701 Aged Gold, 744 Distressed Oak, 791 Old World White,
792 Copper Penny, 793 Mocha, 794 Brandywine, 795 Aged Platinum, Unfinished 091.*

*The Teacup Series (finials, brackets, rings and holdback) are also available in 2 Specialty Contrast finishes:
796 Old World White/Gold, and 797 Black/Aged Platinum.*

BUCKINGHAM™ COLLECTION

Holdbacks



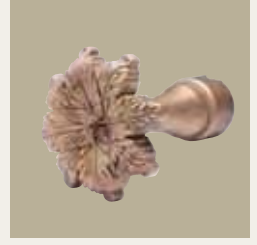
CWB918 Cross Geometric Holdback
Size: 5"w x 5"h x 7½"d

CWB922 Regal Holdback
Size: 7¼"w x 7¼"h x 7¼"d



CWB919 Teacup Holdback
Size: 5¼"w x 5¼"h x 7¼"d

CWB923 Empress Holdback
Size: 5¼"w x 5¼"h x 7¼"d



CWB920 Crown Royale Holdback
Size: 5¼"w x 5¼"h x 8"d

CWB405 Fleur de Lis Holdback
Size: 6"w x 6¼"h x 5"d



CWB921 Wine Flute Holdback
Size: 5¼"w x 5¼"h x 7¼"d

CWB406 Flourish Holdback
Size: 4"w x 4"h x 4½"d



*All items in the Buckingham™ Collection are available in the following finishes:
074 Gold, 084 Mahogany, 700 Rustic Tortoise, 701 Aged Gold, 744 Distressed Oak, 791 Old World White,
792 Copper Penny, 793 Mocha, 794 Brandywine, 795 Aged Platinum, Unfinished 091.*

*The Teacup Series (finials, brackets, rings and holdback) are also available in 2 Specialty Contrast finishes:
796 Old World White/Gold, and 797 Black/Aged Platinum.*

BUCKINGHAM™ COLLECTION

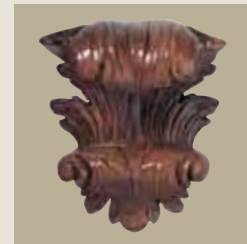
Decorative Brackets • Scarfholders

For use with 1½" and 2" poles



CWB932 Cross Geometric Sconce
Bracket/Scarfholder
Size: 4½"w x 7½"h x 6½"d
For use with 1½" & 2" Poles
Pole Support: 2¼" hole
Clearance: 1½"

ACA312 Leaf Corinthian
Bracket/Scarfholder
Size: 6½"w x 7½"h x 8½"d
For use with 1½" & 2" Poles
Pole Support: U-Shape
Clearance: 1½"



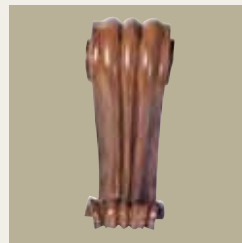
CWB933 Woven Decorative
Bracket/Scarfholder
Size: 5½"w x 7¼"h x 6½"d
For use with 1½" & 2" Poles
Pole Support: 2¼" hole
Clearance: 1½"

ACA306 Palm Leaf
Bracket/Scarfholder
Size: 8"w x 9"h x 8½"d
For use with 1½" & 2" Poles
Pole Support: U-Shape
Clearance: 1½"



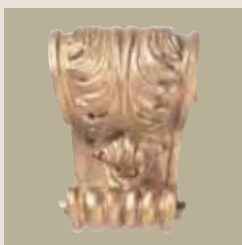
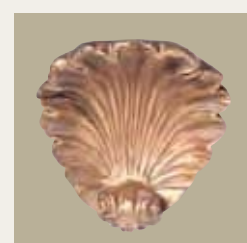
CWB305 Traditional Sconce
Bracket/Scarfholder
Size: 4¾"w x 11"h x 5½"d
For use with 1½" & 2" Poles
Pole Support: 2¼" hole
Clearance: 1"

ACA302 Small Traditional
Bracket/Scarfholder
Size: 5½"w x 8½"h x 7"d
For use with 1½" & 2" Poles
Pole Support: U-Shape
Clearance: 1½"



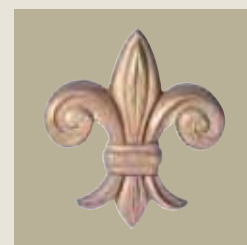
CWB307 Scroll
Bracket/Scarfholder
Size: 4"w x 8½"h x 6½"d
For use with 1½" & 2" Poles
Pole Support: 2¼" hole
Clearance: 1½"

ACA301 Shell
Bracket/Scarfholder
Size: 6"w x 6½"h x 8½"d
Can be used with 2" Pole
Pole Support: U-Shape
Clearance: 1½"



ACA317 Wide Acanthus Leaf
Bracket/Scarfholder
Size: 7"w x 9"h x 5"d
For use with 1½" & 2" Poles
Pole Support: 2¼" hole
Clearance: 2"

CWB309 Fleur de lis
Bracket/Scarfholder
Size: 6"w x 6¾"h x 5"d
For use with 1½" & 2" Poles
Pole Support: U-Shape
Clearance: 1½"



ACA316 Leaf Scroll
Bracket/Scarfholder
Size: 2¼" w x 9½"h x 4"d
For use with 1½" & 2" Poles
Pole Support: 2¼" hole
Clearance: 1½"

CWB310 Folded Napkin
Bracket/Scarfholder
Size: 7"w x 12"h x 5"d
For use with 1½" & 2" Poles
Pole Support: U-Shape
Clearance: 1½"



*All items in the Buckingham™ Collection are available in the following finishes:
074 Gold, 084 Mahogany, 700 Rustic Tortoise, 701 Aged Gold, 744 Distressed Oak, 791 Old World White,
792 Copper Penny, 793 Mocha, 794 Brandywine, 795 Aged Platinum, Unfinished 091.*

*The Teacup Series (finials, brackets, rings and holdback) are also available in 2 Specialty Contrast finishes:
796 Old World White/Gold, and 797 Black/Aged Platinum.*

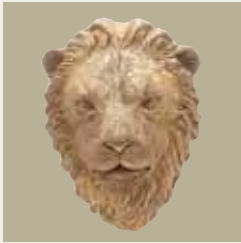
BUCKINGHAM™ COLLECTION

Decorative Brackets • Scarfholders • Scarf Rings
For use with 1½" and 2" poles



ACA309 Acanthus Leaf Small
Bracket/Scarfholder
Size: 3"w x 5½"h x 6¾"d
For use with 1½" & 2" Poles
Pole Support: U-Shape
Clearance: 1½"

CWB326 Elephant Bracket
Bracket/Scarfholder
Size: 6¾"w x 7¾"h x 3¾"d
For use with 1½" & 2" Poles
Pole Support: U-Shape
Clearance: 1½"



CWB325 Lion Bracket
Bracket/Scarfholder
Size: 5½"w x 7"h x 4¾"d
For use with 1½" & 2" Poles
Pole Support: U-Shape
Clearance: 1½"

CWB327 Leaf Scarf Ring
Size: 5"w x 5"h x ¾"d
Inner Diameter: 3"
Outer Diameter: 5"



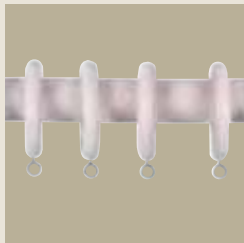
*All items in the Buckingham™ Collection are available in the following finishes:
074 Gold, 084 Mahogany, 700 Rustic Tortoise, 701 Aged Gold, 744 Distressed Oak, 791 Old World White,
792 Copper Penny, 793 Mocha, 794 Brandywine, 795 Aged Platinum, Unfinished 091.*

*The Teacup Series (finials, brackets, rings and holdback) are also available in 2 Specialty Contrast finishes:
796 Old World White/Gold, and 797 Black/Aged Platinum.*

BUCKINGHAM™ COLLECTION

Rings

For use with 1 3/8", 2" and 3" poles



CWB600 Rings

Fits 1 3/8" Pole
Inner Diameter: 1 1/4"
Outer Diameter: 2 1/2"



CWB601 2" Fluted Rings

Fits 2" Pole
Inner Diameter: 2 1/4"
Outer Diameter: 4"



CWB924 2" Tea Cup Ring

Fits 2" Pole
Inner Diameter: 2 1/4"
Outer Diameter: 4"



CWB925 2" Crown Royale Ring

Fits 2" Pole
Inner Diameter: 2 1/4"
Outer Diameter: 4"



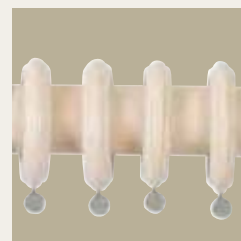
CWB926 2" Bead Ring

Fits 2" Pole
Inner Diameter: 2 1/4"
Outer Diameter: 4"



CWB927 2" Rope Ring

Fits 2" Pole
Inner Diameter: 2 1/4"
Outer Diameter: 4"



CWB602 3" Fluted Ring

Fits 3" Pole
Inner Diameter: 3 1/4"
Outer Diameter: 5 1/4"

All items in the Buckingham™ Collection are available in the following finishes: 074 Gold, 084 Mahogany, 700 Rustic Tortoise, 701 Aged Gold, 744 Distressed Oak, 791 Old World White, 792 Copper Penny, 793 Mocha, 794 Brandywine, 795 Aged Platinum, Unfinished 091.

The Teacup Series (finials, brackets, rings and holdback) are also available in 2 Specialty Contrast finishes: 796 Old World White/Gold, and 797 Black/Aged Platinum.

BUCKINGHAM™ COLLECTION

Brackets
For use with 1½", 2" and 3" poles



CWB502 Fluted Bracket
Size: ¾"w x 3¾"h x 5¼"d
For use with 1½" Pole
Clearance: 3"

CWB915 Crown Royale Bracket
Size: 1"w x 4½"h x 5¼"d
For use with 2" Pole
Clearance: 2½"



CWB503 Fluted Bracket
Size: ¾"w x 4"h x 7½"d
For use with 1½" Poles
Clearance: 5¼"

CWB916 Beaded Bracket
Size: 1"w x 4½"h x 5¼"d
For use with 2" Pole
Clearance: 2½"



CWB500 Fluted Bracket
Size: 1"w x 4¾"h x 5½"d
For use with 2" Pole
Clearance: 2½"

CWB917 Rope Bracket
Size: 1"w x 4½"h x 5¼"d
For use with 2" Pole
Clearance: 2½"



CWB501 Fluted Bracket
Size: 1"w x 6¼"h x 8"d
For use with 2" Pole
Clearance: 4¾"

CWB504 Fluted Bracket
Size: 1"w x 4¾"h x 7"d
For use with 3" Pole
Clearance: 3"



CWB914 Teacup Bracket
Size: 1"w x 4½"h x 5¼"d
For use with 2" Pole
Clearance: 2½"

CWB505 Fluted Bracket
Size: 1"w x 4¾"h x 8½"d
For use with 3" Pole
Clearance: 4¾"



*All items in the Buckingham™ Collection are available in the following finishes:
074 Gold, 084 Mahogany, 700 Rustic Tortoise, 701 Aged Gold, 744 Distressed Oak, 791 Old World White,
792 Copper Penny, 793 Mocha, 794 Brandywine, 795 Aged Platinum, Unfinished 091.*

*The Teacup Series (finials, brackets, rings and holdback) are also available in 2 Specialty Contrast finishes:
796 Old World White/Gold, and 797 Black/Aged Platinum.*

BUCKINGHAM™ COLLECTION

All Buckingham™ items and Estate Ultra™ fascia are available in the following finishes:

ABOUT KIRSCH BUCKINGHAM™ COLLECTION

Each item in the Buckingham™ collection is hand finished or hand-painted for unmatched elegance. Your choices include Gold, Mahogany, Rustic Tortoise, Aged Gold, Distressed Oak, Old World White, Aged Platinum, Brandywine, Mocha, Copper Penny and Unfinished.

All poles have a smooth profile are available in the following sizes: 1½" diameter, 2" diameter and 3" diameter.

1½" Part Number

4' CWB141
6' CWB161
8' CWB181
12' CWB121

2" Part Number

4' CWB142
6' CWB162
8' CWB182
12' CWB122

3" Part Number

4' CWB143
6' CWB163
8' CWB183

2" Fascia Estate Ultra™ CWB9350416

For poles larger than 8', an additional bracket with the same clearance must be used at the pole's splice point.

2" WOOD FASCIA FOR ESTATE ULTRA™ RODS

Heavy Duty
Traversing Rod

All Buckingham™ finishes and 2" finials can be used with Estate Ultra™ Traversing Rod.

074 Gold

084 Mahogany

700 Rustic
Tortoise

701 Aged Gold

744 Distressed
Oak

791 Old World
White

795 Aged
Platinum

794 Brandywine

793 Mocha

792 Copper Penny

Kirsch Window Fashions ©2005
4110 Premier Drive, High Point, NC 27265
Phone: 1.800.225.1988 • Fax: 1.800.545.2325
www.kirsch.com

A Division of
Newell Rubbermaid