



The Valais collection introduces a fresh statement of contemporary designs as an alternative to the traditional medium. This product group features a $\frac{5}{8}$ " diameter rod available in three popular finishes and is meticulously crafted by one of Europe's leading manufacturers.

COLLECTION NOTES:

Vesta recommends additional brackets every 4-5 feet with this collection to properly support the weight of your treatment. For the purpose of quoting, we loosely figure 4 rings per foot - your drapery workroom can provide a more accurate quantity. Tube lengths exceeding 120" will incur significant additional freight charges.

ABBREVIATION KEY:

- D** = diameter
- H** = height
- L** = length
- P** = projection
- W** = width
- ID** = inside diameter
- OD** = outside diameter

AVAILABLE FINISHES:

- AP** = antique pewter
- BP** = black/pewter
- BR** = black/rust

AVAILABILITY:

special order 3-4 weeks, no returns

MATERIALS:

wrought iron, steel

PRODUCT FAMILY:

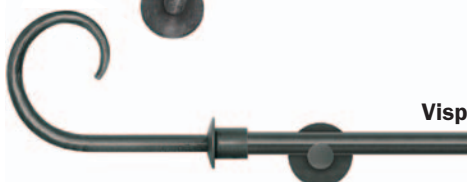
- ◆ Blacksmith's Delight

SEE IT OR SHOW IT ONLINE AT:

www.ivesta.com/bd-vl.html

valais collection

Chalais

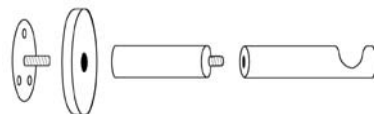


COMPONENT SPOTLIGHT

Featured below is this collection's bracket and bracket extension. Combining the two allows you to create longer projections. The bracket stem and extension simply thread into each other. The wall plate attaches to the wall as usual with three screws. Brackets should always be mounted into wall studs or other solid surfaces.

bracket part no. 162805

extension part no. 169081



valais collection

5/8" diameter
bracket required every 4 - 5 feet

Vesta Inc · 109 Welpine Ridge Road · Pendleton, SC 29670 · 800.638.3782 voice · 864.225.0228 fax · www.ivesta.com

13

Availability: special order 3-4 weeks, no returns | **Available Finishes:** AP, BP, BR | **Materials:** wrought iron, steel | **Product Family:** Blacksmith's Delight

FINIALS



A. Martigny
#161794 - 4"W, 7"L

B. Epaisse
#161792 - 7¾"L

C. Hospice
#161793 - 7"L

D. Sierre
#161795 - 4"W, 6¾"L

E. Zermatt
#161797 - 8½"L

F. Visp
#161796 - 4½"W, 6¾"L

G. Aigle
#161790 - 3"W, 7"L

H. Chalais
#161791 - 8"L

BRACKETS



Rhone Short
#162805
1¾"D, 2"P



Rhone Long
#162808
1¾"D, 3½"P



Rhone Double
#162820
1¾"D, 3½" & 5½"P



Short Extension
#169081 - 1¾"L



Long Extension
#169082 - 3½"L

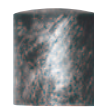


Inside Mount
#162803
1½"D, 1"L

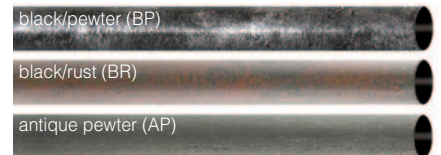
ACCESSORIES



Ring w/clip
#166825
1"ID, 1½"OD

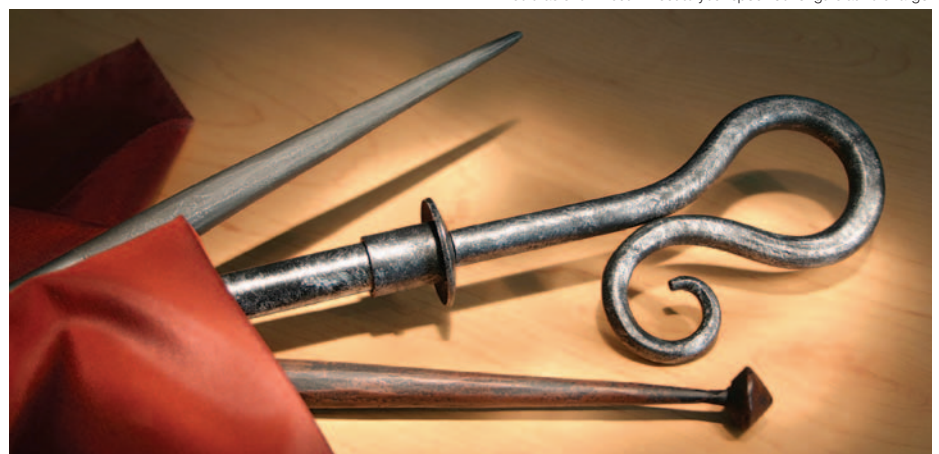


End Cap
#161798
¾"D, 7/8"L



Steel Tubing
#168790 - 5/8"D
4'/6'/8'/10'/12' lengths

*sold as shown but will cut to your specified lengths at no charge



Dimensions shown beneath the hardware describe the physical characteristics of that item - IT DOES NOT REFER TO THE TUBE DIAMETER IT'S COMPATIBLE WITH.