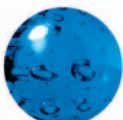




touch of virtue collection

FINIAL COLOR & FINISH KEY

Touch of Virtue only



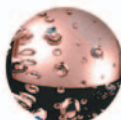
Blue (B)



Clear (C)



Green (G)



Salmon (S)



Fruit (F)



Natural (N)

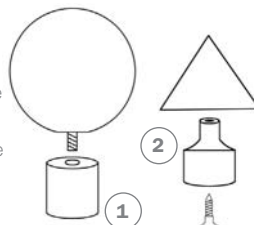


Walnut (W)

COMPONENT SPOTLIGHT

Featured below is this collection's Combo finial bases. There's one base for the glass finials and another for the wood - you must purchase the correct base in order to have your finials function as intended. Be certain to specify which finish you need for your base - AB, BB, BN, PB, or PC.

1. glass finial base
part no. 161381
2. wood finial base
part no. 161461



Vesta's Touch of Virtue collection features stylishly simple wood and glass finial designs, using $\frac{5}{8}$ " diameter tubing. The combination of these mixed medias unites to produce a colorful palette perfectly suited for any contemporary décor. Add a brilliant splash of color and visual intrigue to your next lightweight window treatment by incorporating hardware from our Touch of Virtue collection.

COLLECTION NOTES:

Vesta recommends additional brackets every 4-5 feet with this collection to properly support the weight of your treatment. For the purpose of quoting, we loosely figure 4 rings per foot - your drapery workroom can provide a more accurate quantity. Tube lengths exceeding 120" will incur significant additional freight charges.

ABBREVIATION KEY:

D = diameter
H = height
L = length
P = projection
W = width
ID = inside diameter
OD = outside diameter

AVAILABLE FINISHES:

AB = antique brass
BB = brushed brass
BN = brushed nickel
PB = polished brass
PC = polished chrome

AVAILABILITY:

special order 3-4 weeks, no returns

MATERIALS:

brass, glass, wood

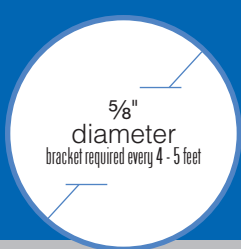
PRODUCT FAMILY:

◆ Elegance en Vogue

SEE IT OR SHOW IT ONLINE AT:

www.ivesta.com/eev-tov.html

touch of virtue collection



Vesta Inc · 109 Welpine Ridge Road · Pendleton, SC 29670 · 800.638.3782 voice · 864.225.0228 fax · www.ivesta.com

Availability: special order 3-4 weeks, no returns | **Available Finishes:** AB, BB, BN, PB, PC | **Materials:** brass, glass, wood | **Product Family:** Elegance en Vogue

FINIALS



Marble
#161382 - 2"D
*hardware shown in AB, clear finial



Frustrum
#161464 - 1 1/2"D, 1 3/4"L
*hardware shown in BN, walnut finial/bracket



Ellipse wood
#161465 - 1 3/8"D, 2 1/8"L
*hardware shown in PC, natural finial/bracket



Ellipse glass
#161383 - 1 1/8"D, 2 3/8"L
*hardware shown in BN, salmon finial

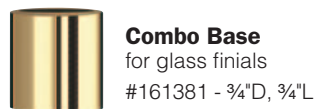


Ovum
#161466 - 1 1/8"D, 1 1/4"L
*hardware shown in PB, walnut finial/bracket

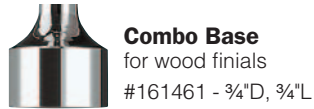


Sphere
#161467 - 1 1/8"D
*hardware shown in BB, fruit finial/bracket

FINIAL BASES



Combo Base
for glass finials
#161381 - 3/4"D, 3/4"L



Combo Base
for wood finials
#161461 - 3/4"D, 3/4"L



Ring w/eye
#166251
7/8"ID, 1 1/4"OD



Ring w/clip
#166823
7/8"ID, 1 1/4"OD



Flat Ring w/eye
#166252
7/8"ID, 1 1/8"OD



Flat Ring w/clip
#166257
7/8"ID, 1 1/8"OD



Wand
#910100 - 39"L
#910125 - 49"L

BRACKETS & ACCESSORIES



Contempo
wall bracket
#162950 - 1 1/2"D, 4"P



bracket extension
#169952 - 2 3/8"L
#169954 - 4 3/4"L

*may be used as a ceiling bracket unless stem has been cut to create a custom projection



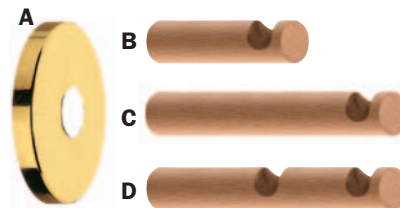
Contempo
double wall bracket
#162952 - 1 1/2"D, 4" & 6 1/4"P



Moderno
wall bracket
#162408 - 1 1/4"D, 3 1/8"P



Moderno
double wall bracket
#162428 - 1 1/4"D, 3 1/8" & 6 1/4"P



A. Combo Bracket Base
#162890 - 1 7/8"D
B. Combo Extension
#169894 - 3/4"D, 2 3/4"P
C. Combo Extension
#169895 - 3/4"D, 4 3/4"P
D. Combo Double
#169892 - 3/4"D, 2 3/4" & 4 3/4"P



Classico
inside mount
#162220 - 1 1/2"D, 7/8"L



End Cap
brass
#161240 - 3/4"D, 1/2"L



End Cap
wood
#161468 - 1"D, 1"L



Brass Tubing
#168000 - 5/8"D

*sold by the foot but may be cut to specified lengths, no charge



Tube Connector
#169229 - 5/8"D, 1 3/8"L
*adjusts 90° to 180°



Tube Splice
#168090W
5/8"D, 4"L

TRAVERSE ITEMS

use brackets AND rings together to create long-span, single-pull, uninterrupted window treatments



Traverse Contempo - center support
#162954 - 1 1/2"D, 4"P



Traverse Ring w/eye
#166112 - 1 1/8"ID, 1 3/8"OD



Traverse Ring w/clip
#166888 - 1 1/8"ID, 1 3/8"OD