



For over a decade, the Ticino collection has been an integral part of Vesta's product mix. This line features simple yet seasoned finial designs suitable in rustic, country and some contemporary spaces. All items are stocked in the available finishes. The 1½" diameter rod is suitable for longer expanses and making that extra statement of boldness.

COLLECTION NOTES:

Vesta recommends additional brackets every 5-7 feet with this collection to properly support the weight of your treatment. For the purpose of quoting, we loosely figure 4 rings per foot - your drapery workroom can provide a more accurate quantity. Tube lengths exceeding 120" will incur significant additional freight charges. The collection's tube splice can be used to achieve longer spans - the required center bracket will help conceal the resulting seam.

ABBREVIATION KEY:

D = diameter
H = height
L = length
P = projection
W = width
ID = inside diameter
OD = outside diameter

AVAILABLE FINISHES:

AP = antique pewter
BP = black/pewter
BR = black/rust

AVAILABILITY:

in-stock, typically ships within 24-48 hours

MATERIALS:

wrought iron

PRODUCT FAMILY:

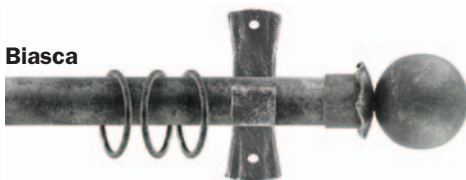
◆ Blacksmith's Delight

SEE IT OR SHOW IT ONLINE AT:

www.ivesta.com/bd-tc.html

ticino collection

Biasca



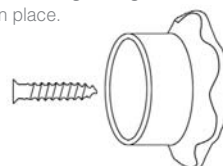
Ascona



COMPONENT SPOTLIGHT

Featured below is this collection's inside mount. You begin installation by mounting one bracket, then slide the tubing in place. To get your final cut length measurement deduct the length of the other inside mount bracket. The last step involves mounting the second bracket, sliding the tubing into place and tightening the set screws to hold it in place.

part no. 282000



ticino collection

1 1/8" diameter
bracket required every 5 - 7 feet

Vesta Inc · 109 Welpine Ridge Road · Pendleton, SC 29670 · 800.638.3782 voice · 864.225.0228 fax · www.ivesta.com

11

Availability: in-stock, typically ships within 24-48 hours | **Available Finishes:** AP, BP, BR | **Materials:** wrought iron | **Product Family:** Blacksmith's Delight

FINIALS

A. Ascona

#281020 - 2 3/8"D, 4 1/8"L
*shown in AP

B. Faido

#281040 - 2 3/8"D, 7 1/4"L
*shown in BP

C. Lugano

#281050 - 2 1/4"W, 7 1/4"L
*shown in BR

D. Biasca

#281030 - 2 3/8"D, 3 1/2"L
*shown in BP

E. Airola

#281010 - 3"W, 5"L
*shown in BR



BRACKETS



Closed Single

#282014
4 3/8"H, 4"P
#282016
4 3/8"H, 6"P



Drop-in Single

#282024
4 3/8"H, 4"P



Drop-in Double

#282026
4 3/8"H, 3" & 6"P



Inside Mount

#282000
1 3/4"D, 1 1/4"L

ACCESSORIES



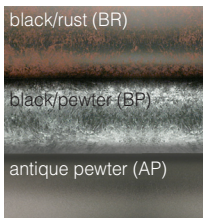
End Cap

#281000
1 3/4"D, 1 1/4"L



Ring w/clip

#286010
1 5/8"ID, 2"OD



Steel Tubing

#287000
1 1/2"D
4'/6'/8'/10'/12' lengths

*sold as shown but will cut to your specified lengths at no charge



Tube Splice

#288090
1 1/2"D, 6"L



Dimensions shown beneath the hardware describe the physical characteristics of that item - IT DOES NOT REFER TO THE TUBE DIAMETER IT'S COMPATIBLE WITH.