



*Toscana*

ROBERT ALLEN  WINDOWS

# Toscana



ROSETTE TIEBACK  
4.5" extension 3.25" Diameter



PIAZZA FINIAL, 1.5"  
4.5"L 3"H



SAXON SMALL FINIAL, 1.5"  
Small: 4.5"L 3"H  
SAXON LARGE FINIAL, 2"  
Large: 5.5"L 3.5"H



CORNER ANGLE  
Available for 1.5" rod only. 4"L



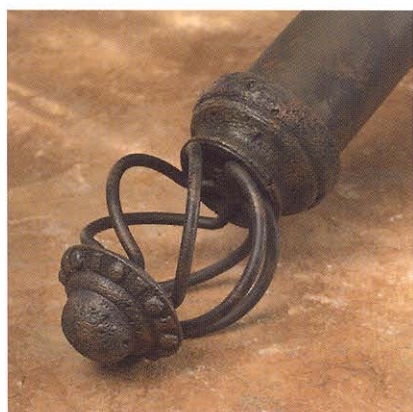
STANDARD & EXTENDED BRACKET  
4.25" and 6" projections respectively for 1.5"  
4.5" and 6.25" projections respectively for 2"



FLORAL TIEBACK  
4.5" extension 4" Diameter



FIRENZE FINIAL, 2"  
5.5"L 4"H



LOGGIA FINIAL, 2"  
5"L 3"H



BELLA FINIAL, 1.5"  
4.25"L 3"H



CAMPAGNA FINIAL, 1.5"  
6.5"L 4.5"H



RING  
1.5" ring is 2" diameter  
2" ring is 2.5" diameter



SWING ARM  
.5" diameter 27.5"L



LIMESTONE



LIMESTONE



EARTH RUST



EARTH RUST



SIENNA



SIENNA



ITALIAN GOLD



ITALIAN GOLD



ANTIQUE



ANTIQUE

#### HARDWARE FEATURES

- 7 finial choices; 4 styles in 1.5" and 3 styles in 2"
- All hardware is available in all finishes: Antique, Earth Rust, Italian Gold, Limestone and Sienna
- Layering of color creates color variation in the finishes that is to be expected and appreciated; it is part of the inherent beauty of this collection
- Two rod widths: 1.5" and 2" are available in Plain and Rope styles; both styles are available in 4' and 8' lengths
- Rope Rod is wood; Plain Rod is metal
- A center support is recommended on any rod lengths 8' or greater
- All items are shown in the Earth Rust finish

*This collection is exclusive to Robert Allen.*

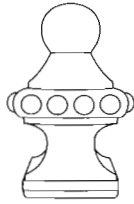
#### COVER PHOTO

finial: Loggia Sienna  
 rod: 2" Rope Rod Sienna  
 rings: 2.5" Sienna  
 fabric: Waltrip, *Caper*

# Toscana



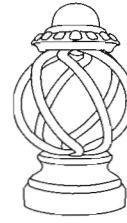
1



2



3

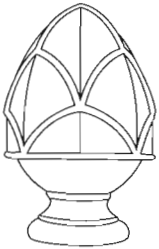


4

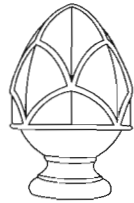


5

## FINIALS



6



7



8

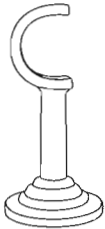


9



15

## TIEBACK



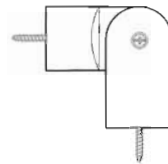
10



11



12



13



14

## BRACKETS

## OTHER



16



17



18

## RODS

### FINIALS

- 1 Firenze finial, 2" (5.5"L 4"H)
- 2 Piazza finial, 1.5" (4.5"L 3"H)
- 3 Bella finial, 1.5" (4.25"L 3"H)
- 4 Loggia finial, 2" (5"L 3"H)
- 5 Campagna finial, 1.5" (6.5"L 4.5"H)
- 6 Saxon large finial, 2" (5.5"L 3.5"H)
- 7 Saxon small finial, 1.5" (4.5"L 3"H)

### TIEBACK

- 8 Floral tieback (4.5" extension 4" diameter)
- 9 Rosette tieback (4.5" extension 3.25" diameter)

### BRACKETS

- 10 Standard and Extended brackets  
(1.5" Standard bracket projects 4.25")  
(1.5" Extended bracket projects 6")  
(2" Standard bracket projects 4.5")  
(2" Extended bracket projects 6.25")
- 11 Inside Mount (available for 1.5" and 2" rods)

### OTHER

- 12 Endcap (available for 1.5" and 2" rods)
- 13 Corner angle (available for 1.5" rod only. 4"L)
- 14 Ring (available for 1.5" and 2" rods. Ring for 1.5" rod is 2" diameter and ring for 2" rod is 2.5" diameter)
- 15 Wand (40"L)

### RODS

- 16 Plain rod (available in 1.5" and 2" diameters; 4' and 8' lengths)
- 17 Rope rod (available in 1.5" and 2" diameters; 4' and 8' lengths)
- 18 Swing arm (.5" diameter 27.5"L)

To adjust rod length, please follow general installation instructions for shortening wooden rods

**ROBERT ALLEN**  **WINDOWS**

For customer service in the United States call 1.800.333.3777,  
in Canada 1.800.363.3020, in Europe +44 (0) 1494 474741.